

THIS WEEK

Ongoing

» David Eichenger's and Kathleen McLaughlin's New Perspective photography exhibit (through October 29), Photography Galleries.

8 • Saturday

» Patron of the Arts' "Race for the Arts," Los Alamitos Race Course, 6 p.m.

10 • Monday

» Foundation's Golf Classic, Old Ranch Country Club, 9:30 a.m.–5 p.m.

11 • Tuesday

» NOCCCD board meeting, Anaheim Campus, 5:30 p.m.

12 • Wednesday

» The Model Art exhibition opens (through November 8), Fine Arts Gallery. Reception, Fine Arts Gallery, 7–9 p.m.

THEY SAID IT

"The brain is a wonderful organ. It starts working the moment you get up in the morning and does not stop until you get into the office."

– Robert Frost

@Cypress is published each week. If you would like to have items included, please contact Marc Posner in the Public Information Office at ext. 47006 or mposner@CypressCollege.edu.

Margie Lewis, President
(714) 484-7308
mlewis@CypressCollege.edu

@Cypress

October 7, 2005 Newsletter from President Margie Lewis

Core Values:

Excellence

Integrity

Collegiality

Inclusiveness

Dynamic Brain-Based Research Presentation Returns with Updates

► **Participants will view the brain through neuro-imaging and get an overview of how language is processed by the brain.**

All faculty, classified staff and managers are invited to attend the Title V Seminar: "Using Brain Research to Energize and Enhance Instruction & Student Services."

Janet N. Zadina, Ph.D. and Post-Doctoral Fellow at Tulane University School of Medicine, will return with the latest research on what educators should know about the brain and learning.

Participants will be able to view the human brain through neuroimaging technology and get an overview of how language is processed in the brain. This overview will enable them to have a better understanding of the many articles and new research about the brain. Through experiential activities and a power point presentation, participants will acquire principles about how the brain learns and specific strategies that they can implement immediately to energize and enhance learning about the students we serve.

The topics covered in these sessions include physiology of the brain, accessing multiple pathways, creating the big picture through

context, pattern-seeking, addressing individual differences, the role of emotion in learning, the use of metaphor and music in learning, social aspects of learning, and measuring progress.

If you are interested in attending this two-day seminar, please send an e-mail to staffdev@CypressCollege.edu or ndeutsch@CypressCollege.edu by Friday, October 14, stating your commitment to attend both sessions and contribute to the creation of strategies utilizing research on how the brain functions and how individuals learn. Reservations are required.

If you are unable to attend both sessions, please make a reservation for one of the sessions. Janet is an outstanding speaker and she promises that each session will stand alone.

Equivalent unit credit or professional growth credit toward advancement on the pay scale for full participation is available. You may also receive flex credit for attendance.

The seminars will take place on October 28 and November 4. Both sessions will begin at 8:30 a.m. and end at 3:30 p.m. at the Anaheim campus, Rooms 105.

Lunch and conference materials will be provided. Space is limited to 60 participants; if space is available, the seminar will be opened to Fullerton College and School of Continuing Education employees.

Staff Development Holiday Fundraiser

In the spirit of the season, Staff Development is holding a holiday fundraiser. Support Staff Development by purchasing beautiful holiday evergreens fresh from the Pacific Northwest. All orders must be submitted by Wednesday, November 2. Make checks payable to "Cypress College." The festive evergreens will be delivered the week following Thanksgiving. To see products or place an order, please contact the representative(s) in your division listed on the [attached flyer](#) or call ext. 47324.

Transfer Awareness Week

The week of October 17 is Transfer Awareness Week. A transfer fair will be held on October 17, from 10 a.m. to 1 p.m., in front of the Humanities building. Representatives from local universities will be on hand to answer general questions about the university and the programs that they offer as well as provide students with brochures and information. The Transfer Center will also be offering [multiple workshops](#) throughout the week to assist students in completing the transfer process.

@Cypres
Online

Department of Geography
Earth Science, GIS, and Human Landscapes



Social Sciences Division

Earthquake Preparedness

Friends and Colleagues:

Hurricane Katrina and Rita have demonstrated the powerful forces of nature, while devastating the Gulf South. The Department of Geography would like to gently remind everyone that we live in earthquake country! Now would be a very good time to re-evaluate your readiness for a major quake in Southern California. All of us should take a close look at the way we have or have not planned for a major disaster in our region.

Begin your planning by assessing the potential hazards in the area. Then you should make plans for 3 different locations. Each location is a little different than the other, and everybody has unique needs and special conditions. Our advice is to get yourself ready: 1. At home; 2. At Cypress College; 3. in your car

We've listed below a few useful Internet sites that can help you prepare for a major earthquake or other disaster locally. Each site has its own merit, and each site offers information and advice that we think you will find useful.

Be prepared!

<http://www.earthquakecountry.info/>
<http://www.redcross.org/index.html>

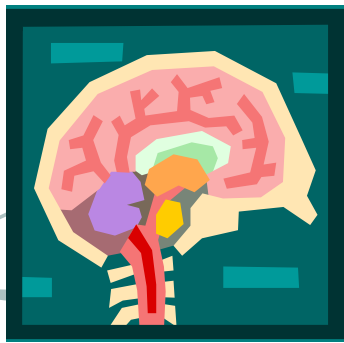
<http://www.seismic.ca.gov/hog.htm>
<http://www.scec.org>

Nick Polizzi

Les Doak

Armando Mendoza

Department of Geography
"The Other Earth Science"



Back by Popular Demand!

Seminar for
Faculty, Classified Staff & Managers

Title V Seminar: “Using Brain Research to Energize and Enhance Instruction & Student Services”

Friday, October 28, 2005 — Part I

Friday, November 4, 2005 — Part II

8:30 a.m. to 3:30 p.m. in Room 105, Anaheim Campus

Janet N. Zadina, Ph.D. and Post-Doctoral Fellow at Tulane University School of Medicine, will return with **the latest research** on what educators should know about the brain and learning. You will **view the human brain through neuroimaging technology** and get an overview of what we currently know about how language is processed in the brain. This overview will enable you to have a better understanding of the many articles and new research about the brain. Then, through experiential activities and a power point presentation, you will acquire principles about how the brain learns and specific strategies that you can implement immediately to energize and enhance learning of the students you serve. The topics covered in these sessions include:

- physiology of the brain
- accessing multiple pathways
- creating the big picture through context
- pattern-seeking
- addressing individual differences
- the role of emotion in learning
- the use of metaphor and music in learning
- social aspects of learning
- measuring progress

If you are interested in attending this two-day seminar, please send e-mail to staffdev@cypresscollege.edu or ndeutsch@CypressCollege.edu,

stating your commitment to attend both sessions and contribute to the creation of strategies utilizing research on how the brain functions and how individuals learn.

Earn 1/2 equivalent unit credit OR professional growth credit toward advancement on the pay scale for full participation. You may also receive flex credit for attendance.

If you are unable to attend both sessions, please make a reservation for one of the sessions. Janet is an outstanding speaker and she promises that each session will stand alone.

STAFF DEVELOPMENT

2005 Evergreens Fundraiser

The Staff Development Committee is ready to host our 2005 Evergreens Fundraiser. We will be selling an assortment of fresh pinecones, wreaths and garlands ranging from \$7 to \$62. See any of the campus representatives listed below for product information and order forms.

Evergreens will be delivered the week after Thanksgiving.

Department	Contact	Extension
Administration	Vicki Sykes	x47330
Business	Aggie Martinez	x47213
Bursar's Office	Lisa Morales	x47319
Career Planning	Nancy Miller	x47120
Fine Arts	Dan Stephens	x47035
Health Science	Pat Boer	x47283
Health Services	MaryLou Giska	x47045
Language Arts	Barbara Kashi	x48174
Physical Plant	Marcia Clarke	x48069
S.C.E.	Dean Day	x47063
SEM & DSP&S	Frances Wahl	x47105
Social Science	Virgil Adams and Nancy Pound	x48220 x47185
Vo - Tech	Robert Chavez	x47245

FOR MORE INFORMATION CONTACT ELIZABETH AT (714) 484-7324

Cypress College – FALL 2005

2nd Session Short Term Classes Begin On or After October 24, 2005

CRN	SEC	DATES	TIME	DAYS	INSTRUCTOR	ROOM	CRN	SEC	DATES	TIME	DAYS	INSTRUCTOR	ROOM
ACCOUNTING							ENGLISH						
ACCT 103 C		COMPUTERIZED ACCOUNTING				1 Unit	ENGL 058 C		READING AND WRITING II				4 Units
13056	100	10/27-12/15	4:30P- 6:50P	R	Muise, M.	BUS-317	13745	700	10/24-12/21	ONLINE		Jones, S.	
14327	700	10/28	10:30A-12:30P	F	Miller, J.	BUS-319	13748	701	10/24-12/21	ONLINE		Jones, S.	
		12/16	10:30A-11:50A	F	Miller, J.	BUS-319							
		10/24-12/21	+ ONLINE	PORTION	Miller, J.								
AIRLINE AND TRAVEL CAREERS							ENGLISH						
ATC 170 C		JOB SKILLS COMMUNICATION				1½ Units	ENGL 060 C		COLLEGE WRITING PREPARATION				3 Units
14244	001	11/02-12/21	9:00A-12:10P	W	Reiland, K.	TE2-206	10841	027	10/25-12/20	1:30P- 5:45P	T R	Fujimoto, J.	HUM-101
12627	100	11/01-12/20	6:00P- 9:10P	T	STAFF	TE2-206							
ATC 298AC		CABIN SAFETY SIMULATION				½ Unit	ENGL 096 C		COLLEGE READING STRATEGIES				3 Units
14631	002	11/07-11/10	9:30A-12:20P	M	Reiland, K.	TE2-206	13792	700	10/24-12/21	ONLINE		Kashi, B.	
			9:30A- 3:20P	R	Reiland, K.	BOEING							
ANTHROPOLOGY							ENGLISH						
ANTH 102 C		CULTURAL ANTHROPOLOGY				3 Units	ENGL 100 C		COLLEGE WRITING				3 Units
10028	004	10/24-12/21	3:30P- 6:20P	M W	STAFF	HUM-323	11064	027	10/25-12/20	1:30P- 5:45P	T R	Najm, T.	HUM-106
ART							ENGLISH						
ART 110 C		INTRODUCTION TO ART				3 Units	13732	703	10/24-12/21	ONLINE		Schroeder, N.	
13974	701	10/24-12/21	ONLINE		Rothschild-Boros, M.		14426	706	10/24-12/21	ONLINE		Zuidervaart, G.	
ASTRONOMY							ENGLISH						
ASTR 116 C		INTRODUCTION TO ASTRONOMY				3 Units	13731	702	10/25	6:30P- 8:20P	T	Kabaji, N.	HUM-324
13170	102	10/25-12/20	6:00P- 9:10P	T R	Vu, P.	SEM-308			12/20	6:30P- 8:20P	T	Kabaji, N.	HUM-324
AUTOMOTIVE TECHNOLOGY							ENGLISH						
AT 203 C		TOYOTA ENGINE CONTROLS 852				2 Units			10/24-12/21	+ ONLINE	PORTION	Kabaji, N.	
12879	100	10/25-12/08	6:30P- 9:00P	T R	Fu, A.	TE1-105	ENGL 102 C		INTRODUCTION TO LITERATURE			Marshall, B.	3 Units
AT 207 C		TOYOTA AUTOMATIC TRANS 262				1½ Units	13739	701	10/24-12/21	ONLINE			
14082	100	10/26-11/23	6:30P- 9:20P	M W	Moreno, J.	TE1-105	ENGL 103 C		CRITICAL REASONING AND WRITING			Fague, A.	3 Units
AT 208 C		TOYOTA MANUAL TRANS 302				1 Unit	13743	703	10/24-12/21	ONLINE			
12893	100	11/28-12/14	6:30P- 9:20P	M W	Moreno, J.	TE1-105	ENGL 106 C		CRITICAL THINKING			Klein, M.	3 Units
AT 221 C		UPPER ENGINE BLUEPRINTING				2 Units	13776	700	10/24-12/21	ONLINE			
12883	100	10/25-12/20	7:00P- 9:05P	T R	Dighera, M.	TE3-115	GEOGRAPHY						
AVIATION							GEOGRAPHY						
AVIA 298BC		JET SIMULATOR ORIENTATION				½ Unit	GEOG 100 C		WORLD GEOGRAPHY				3 Units
14634	100	10/28-11/04	6:00P- 8:50P	F	STAFF	TE2-206	10401	005	10/24-12/21	2:00P- 4:50P	M W	Quinn, C.	HUM-320
		11/14-11/18	TBA	TBA	STAFF	BOEING	GEOG 231 C		GEOGRAPHIC INFORMATION SYSTEMS: VECTOR APPLICATIONS				3 Units
COMPUTER INFORMATION SYSTEMS							HEALTH INFORMATION TECHNOLOGY						
CIS 107 C		INTRODUCTION TO WINDOWS				1 Unit	HI 100 C		TRENDS IN HEALTH CARE DELIVERY				2 Units
11102	101	10/25-12/20	6:00P- 7:50P	T	Kennard, A.	BUS-311	13086	102	10/20-12/15	5:00P- 9:15P	R	Brown, D.	TE3-213B
CIS 231 C		CISCO NETWORKING 2				3 Units	HEALTH SCIENCE						
13110	100	10/24-12/21	5:00P- 6:59P	M W	Izadi, B.	BUS-248	HS 066 C		SELECTED TOPICS FOR NURS 297 C				½ - 2 Units
LAB			7:00P- 9:50P	M W	Izadi, B.	BUS-248	13201	001	10/24-12/19	11:00A-11:50A	M	STAFF	TE3-213A
COUNSELING AND STUDENT DEVELOPMENT							HISTORY						
COUN 074 C		COMPUTER ACCESS II				3 Units	HIST 170 C		HISTORY OF THE UNITED STATES				3 Units
13406	001	10/25-12/20	12:00N- 2:14P	T R	Michelle, D.	SEM-129	12593	006	10/24-12/21	2:00P- 4:50P	M W	Newman, J.	HUM-311
LAB			2:15P- 5:20P	T R		SEM-129	13960	801	11/04-12/10	6:00P- 9:50P	F	Reeve, T.	HUM-125
COUN 140 C		EDUCATIONAL PLANNING				½ Unit			8:00A- 3:50P	S	Reeve, T.	HUM-125	
14264	031	10/28-11/04	8:30A-12:45P	F	Grantham, R.	TE2-203	HIST 171 C		HISTORY OF THE UNITED STATES				3 Units
14489	035	10/26-11/23	10:00A-10:50A	M W	Mosqueda-Ponce, T.	BUS-318A	12353	007	10/25-12/20	3:30P- 6:40P	T R	Reeve, T.	HUM-330
13226	027	10/25-11/10	11:00A-12:15P	T R	Lawson, V.	HUM-244	HUMAN SERVICES						
COUN 141 C		CAREER EXPLORATION				1 Unit	HUSR 200 C		INTRODUCTION TO HUMAN SERVICES				3 Units
14540	012	10/25-12/06	7:30A- 8:45A	T R	Easton, S.	TE2-203	10433	002	10/25-12/20	3:30P- 6:40P	T R	Zager, G.	HUM-246
14544	010	10/26-11/30	12:00N- 2:50P	W	Easton, S.	TE2-203	HUSR 275 C		ETHICAL ISSUES IN HUMAN SERVICES				3 Units
COUN 151 C		CAREER AND LIFE PLANNING				3 Units	12597	100	10/24-12/21	4:00P- 6:50P	M W	Kistner, W.	HUM-244
14537	704	10/24-12/21	ONLINE		Mattson, C.		MARKETING						
DENTAL ASSISTANT							MATH						
DA 058 C		CLINICAL EXTERNSHIP I				1½ Units	MATH 025 C		ELEMENTARY ALGEBRA REVIEW				2 Units
13183	601	10/24-12/19	9:00A- 9:59A	M	STAFF	DNTOFF	13242	800	10/29-12/17	8:00A- 1:05P	S	Carbonell, J.	SEM-217
LAB			10:00A-11:50A	M		DNTOFF	MATH 045 C		INTERMEDIATE ALGEBRA REVIEW				2 Units
LAB			1:00P- 4:50P	M		DNTOFF	13621	800	10/29-12/17	8:00A- 1:05P	S	Can, M.	SEM-206
ECONOMICS							MATH						
ECON 105 C		PRINCIPLES OF ECONOMICS-MICRO				3 Units	MATHEMATICS						
10036	003	10/25-12/20	2:00P- 5:10P	T R	Schick, P.	HUM-103	MATHEMATICS						

M = Monday T = Tuesday W = Wednesday R = Thursday F = Friday S = Saturday U = Sunday

CRN	SEC	DATES	TIME	DAYS	INSTRUCTOR	ROOM	CRN	SEC	DATES	TIME	DAYS	INSTRUCTOR	ROOM
NURSING							PSYCHIATRIC TECHNICIAN						
NURS 105 C		BASIC CARDIOPULMONARY NURSING				½ Unit	PT 115 C		NURSING SCIENCE II				7 Units
14443	800	11/05	8:00A- 5:20P	S	Piburn, E.	TE3-310	14438	001	10/24-12/15	6:30A- 2:35P	MT	Miller, P.	HOSP
NURS 105HC		HONORS CARDIOPULMONARY NURSING				½ Unit				7:00A-12:10P	WR	Ramos, J.	TE3-311
14444	800	11/05	8:00A- 5:20P	S	Piburn, E.	TE3-311					W	Miller, P.	TE3-311
NURS 193 C		INTRO TO MED-SURG/GERO NURSING				3½ Units	LAB			12:15P- 1:05P	W	Ramos, J.	TE3-311
14587	002	10/24-12/21	8:00A-10:50A	M	Harvey, C.	TE3-310						Miller, P.	
LAB			8:00A-11:15A	T		TE3-310						Ramos, J.	
LAB			TBA	MTWR		HOSP							
NURS 197 C		MATERNAL/NEWBORN NURSING				3½ Units	PT 125 C		DEVELOPMENTAL DISABILITIES II				6½ Units
14513	001	10/24-12/14	8:00A-11:35A	M	Putman, E.	TE3-315	14584	001	10/24-12/15	6:30A- 2:35P	MTW	Selga, M.	HOSP
LAB			TBA	TW	Piburn, E.	HOSP				7:00A- 2:55P	R	Franks, J.	TE3-316
NURS 293 C		MENTAL HEALTH NURSING				3½ Units	PT 135 C		MENTAL DISABILITIES II				7½ Units
14525	001	10/24-11/17	7:00A- 5:20P	WR	Chin, P.	HOSP	14583	001	10/24-12/15	6:30A- 3:30P	MT	Boyce, J.	HOSP
			8:00A-10:50A	M	Chin, P.	TE3-213B				7:00A-12:10P	WR	Boyce, J.	TE3-315
			8:00A-12:35P	T	Chin, P.	TE3-316	LAB			12:30P- 2:50P	W	Boyce, J.	TE3-315
LAB			1:00P- 2:50P	T		TE3-316							
LAB			2:00P- 3:50P	M		TE3-311							
14527	002	11/21-12/15	7:00A- 6:30P	WR	Chin, P.	HOSP							
			8:00A-10:50A	M	Chin, P.	TE3-213B							
			8:00A-12:35P	T	Chin, P.	TE3-316							
LAB			1:00P- 2:50P	T		TE3-316							
LAB			2:00P- 3:50P	M		TE3-311							
NURS 294 C		GERIATRIC NURSING				3 Units	PSY 101 C		GENERAL PSYCHOLOGY				3 Units
14531	001	10/24-11/17	6:30A- 4:50P	TW	Kruse, K.	HOSP	13536	014	10/24-12/21	2:00P- 4:50P	M W	Cooper, C.	HUM-124
			8:00A-10:50A	M	Valencia, W.	TE3-311	13158	012	10/25-12/20	2:00P- 5:10P	T R	Young, B.	HUM-124
			8:00A-11:25A	R	Valencia, W.	TE3-310	13925	801	11/04-12/10	6:00P- 9:50P	F	Martinez, M.	HUM-124
14532	002	11/21-12/15	6:30A- 4:50P	TW	Kruse, K.	HOSP				8:00A- 3:50P	S	Martinez, M.	HUM-124
			8:00A-10:50A	M	Valencia, W.	TE3-311	PSY 139 C		DEVELOPMENTAL PSYCHOLOGY				3 Units
			8:00A-12:50P	R	Valencia, W.	TE3-310	14602	003	10/25-12/20	3:30P- 6:40P	T R	Gonzales, J.	HUM-125
NURS 297 C		MED-SURG NURSING III				5 Units	PSY 218 C		PARENTING THE ABUSED CHILD				½ Unit
14536	001	10/24-12/15	8:00A-10:20A	M	Winkler, J.	TE3-317	14468	801	10/29	8:00A- 5:20P	S	Lee, C.	HUM-244
			8:00A-10:15A	T	Wilson, M.	TE3-317	PSY 237 C		CROSS-CULTURAL RELATIONSHIPS				3 Units
LAB			11:00A-12:50P	T	Wilson, M.	TE3-315	12299	002	10/24-12/21	3:30P- 6:20P	M W	Young, B.	HUM-317
LAB			TBA	WR		HOSP							
PHILOSOPHY AND RELIGIOUS STUDIES							RADIOLOGIC TECHNOLOGY						
PHIL 100 C		INTRODUCTION TO PHILOSOPHY				3 Units	RADT 173 C		ULTRASOUND INSTRUMENTATION				1½ Units
10652	100	10/25-12/20	6:30P- 9:40P	T R	Young, M.	HUM-319	13014	001	10/28-12/16	8:00A-12:15P	F	Anton, E.	TE3-311
PHYSICAL EDUCATION							SOCIOLOGY						
PE 152 C		FITNESS TRAINING LAB				½ - 2 Units	SOC 101 C		INTRODUCTION TO SOCIOLOGY				3 Units
14589	002	10/24-12/21	TBA	MTWRFS	Rubino, K.	G1-102	12335	008	10/24-12/21	3:30P- 6:20P	M W	Brewer, C.	HUM-120
PE 156 C		POWER TRAINING				½ - 2 Units	SOC 218 C		PARENTING THE ABUSED CHILD				½ Unit
14592	002	10/24-12/21	TBA	MTWRFS	Rubino, K.	G1-102	13034	800	10/29	8:00A- 5:20P	S	Lee, C.	HUM-244
PE 234 C		CONTEMPORARY PERSONAL HEALTH				3 Units	SOC 237 C		CROSS-CULTURAL RELATIONSHIPS				3 Units
11499	101	10/25-12/20	6:15P- 9:25P	T R	Shelkey, R.	G2-201	12302	002	10/24-12/21	3:30P- 6:20P	M W	Young, B.	HUM-317
POLITICAL SCIENCE							SPEECH						
POSC 100 C		UNITED STATES GOVERNMENT				3 Units	SPCH 100 C		HUMAN COMMUNICATION				3 Units
10219	010	10/25-12/20	3:30P- 6:40P	T R	Eperjesi, K.	HUM-329	12102	021	10/25-12/20	12:30P- 3:40P	T R	Kaimikaua, C.	HUM-247
							14576	022	10/24-12/21	2:00P- 4:50P	M W	STAFF	HUM-239
THEATER ARTS							THEATER ARTS						
THEA 100 C		INTRODUCTION TO THE THEATER				3 Units	13880	705	10/24-12/21	ONLINE		Christensen, G.	
							13881	706	10/24-12/21	ONLINE		Depontee, F.	

Cypress College Transfer Awareness Week

October 17-21, 2005

Monday Oct. 17th, 2005

Transfer Day Fair
in front of Humanities
10am-1pm

Art Major Specific Mini-Fair
10am-1pm in FA 1st Floor Lobby Area

Chapman University Rep. Appts.
2-4pm @ The Transfer Center

UC Irvine Rep. Appts.
2-4pm @ The Transfer Center

"How to Transfer To UCLA" Workshop
2-3pm @ FA-112

Tuesday, October 18, 2005

UC Irvine Rep. Appts.

9am-4pm @ The Transfer Center

"How To Make A Smooth Transition to the university" Workshop

2-3pm in FA-112

"How To Search The Web For Scholarships" Workshop

3-4pm in FA-112

"How To Fill Out The UC Application" Workshop

1:30pm-2:30pm in FA-Staff Conf. Rm.

Wednesday, October 19, 2005

Computer Science, Engineering & Math Mini-Fair

10am-1pm @ SEM 1st Floor Lobby Area

"How To Write The UC Essay" Workshop

2-3pm in FA-311

"How To Use ASSIST" Workshop

2-3pm in FA-112

"How To Apply For Financial Aid" Workshop

3-4pm in FA-112

Thursday, October 20, 2005

Math & Natural Sciences Mini Fair

10am-1pm @ SEM 1st Floor Lobby

UC Santa Barbara Rep. Appts.

2:30pm-5:30pm @ The Transfer Center

CSU Fullerton Rep. Appts.

3-5pm @ The Transfer Center

"How to Transfer to a CSU" Workshop

5-6pm @ FA-Staff Conf. Room

Friday, October 21, 2005

UC Irvine Tour

7am-1pm (Meet at the Transfer Center)

CSU Fullerton Rep. Appts.

11-2pm @ The Transfer Center

"How To Fill Out the CSU Application" Workshop

2-3pm @ FA-Staff Conf. Rm

Cypress College Transfer Center is located in FA-100

Office Hours: 8am-5pm

Phone Number: (714) 484-7131