

THIS WEEK

Ongoing

- » David Eichenger's and Kathleen McLaughlin's New Perspective photography exhibit (through October 29), Photography Galleries.
- » The Model Art exhibition (through November 8), Fine Arts Gallery.

17 • Monday

- » Transfer Awareness Week: Transfer Fair, in front of the Humanities Building, 10 a.m. – 1 p.m.

20 • Thursday

- » David Eichenger's "Euro-Foto" and Kathleen Laraia McLaughlin's "Shades of Romania" photography exhibit (through December 9), Photography Galleries. Reception and artist talk, Tech Ed II, 7–9 p.m.

21 • Friday

- » "Into the Woods" opens, Campus Theater, 8 p.m. Additional performances on October 22, 28 and 29 at 8 p.m.; October 23 and 30 at 4 p.m.

THEY SAID IT

"I think that somehow, we learn who we really are and then live with that decision."

– Eleanor Roosevelt

"The most wasted of all days is one without laughter."

– E.E. Cummings

@Cypress is published each week. If you would like to have items included, please contact Marc Posner in the Public Information Office at ext. 47006 or mposner@CypressCollege.edu.

Margie Lewis, President
(714) 484-7308
mlewis@CypressCollege.edu

@Cypress

October 14, 2005 Newsletter from President Margie Lewis

Core Values:

Excellence

Integrity

Collegiality

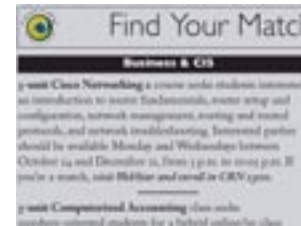
Inclusiveness

Campus Plays Matchmaker for Second Half-Semester Classes

► **Flyers are going out on campus to help motivated students find a class that matches their needs.**

It's a typical college frustration. A student is looking to pick up a class to replace one they dropped, or to complete their studies that much quicker. At the same time, a faculty member is seeking an extra few students to make sure their class "goes."

Matchmaker, matchmaker, make me a match.



That's where the new promotional campaign for second Half-Semester classes comes in. Going out on campus next week are a series of flyers parodying newspaper personal ads.

Labeled "Find Your Match" the flyers instruct students how to

make a match. They also highlight classes that have capacity. Specific classes were selected with assistance from deans and division office managers; suggestions to the Public Information Office are always welcome.

Helping students who are academically prepared to take another class will help the college meet its enrollment goals.

Transfer Awareness Week Debuts with Information, Workshops and University Reps

The Transfer Center is set to host its first Transfer Awareness Week from October 17 to 21.

The week will begin with a Transfer Fair that features representatives from four-year colleges and universities. Approximately 40 representatives are expected to attend. The fair will be held in front of the Humanities building on October 17, from 10 a.m. to 1 p.m. Representatives will have general information about their schools as well as information on specific majors and programs.

Students can also set up appointments with representatives on an individual basis by contacting the Transfer Center.

There will also be a variety of transfer workshops throughout the week. The culminating event of the week will be the Transfer Track Conference at UCI on Friday, October 21. The conference begins at 8 a.m. and ends at noon. Students who are interested in attending the field trip may register by visiting the Transfer Center, located in Fine Arts 100, or by calling (714) 484-7129.

Into the Woods Opens October 21

Into the Woods is set to open Friday, October 21 at 8 p.m. in the campus theater. The musical, featuring James Lapine's enchanting book and Stephen Sondheim's haunting music, follows a witch, a baker and his wife, Cinderella, Little Red Riding Hood, and assorted princes as they venture into an enchanted forest seeking "happily ever after." Additional performances are as follows: October 22, 28 and 29 at 8 p.m.; October 23 and 30 at 4 p.m. General admission is \$15. For reservations, call ext. 47200.

Laughter for the Health of It - Part II

The Staff Development Committee is sponsoring Laughter for the Health of It — Part II. Presented by Mary Lou Giska and Andrea Hannon, the workshop will be held on Wednesday, October 26, from 11 a.m. to noon and from 1 p.m. to 2 p.m., in Tech Ed III, Room 222.

Faculty members are eligible to earn one hour of flex credit for attending. For more information, contact Elizabeth Douglas at ext. 47324.

CHARGERS

Donna Friess was invited to speak at the annual conference of the Organization for the Study of Communication, Language and Gender. She presented her paper, "Behind the Red Curtain: Teaching Western Communication Patterns to Chinese University Students: One Teacher's Report," in Reno on Thursday, October 13.



The women's soccer team won 7-0 over Fullerton College on Tuesday, October 11, to improve to 12-0-2 overall and 7-0-1 in conference play. The defending state champions held Fullerton to only three shots on goal as a team. The Chargers play at Saddleback on Tuesday, October 18, at 3 p.m.

Booksale Upcoming

The Annual Language Arts Scholarship Booksale is fast approaching. It will be held October 24-27 in the Language Arts foyer on the second floor of the Humanities Building.

Donated books are sold for \$1-\$1.50. This year features a wonderful selection of books, so these are truly bargain prices. All proceeds from the sale fund scholarships that are awarded to Language Arts students each year.

Mrs. Meanswell Returns for October's Disabilities Awareness Month

In celebration of Disabilities Awareness Month, there are a couple of great activities being planned.

First, by popular demand, she's back! Mrs. Gladys Meanswell (a.k.a. Fran Wahl) shows her "sensitive" side in working with students with disabilities. Don't miss her as she demonstrates "Disability Etiquette: The Do's and Don'ts of Interacting With People With Disabilities" on Thursday, October 27 from 2 to 4 p.m. in the Theater Lobby. Students in Mrs.

Meanswell's class will be portrayed by members of the Friends of Diversity Club.

The Cypress College Wheelchair Basketball Team will take on the Human Services Club in a fundraising game on Saturday, October 29, at 7 p.m. Tickets are \$5 per person (kids under 15 are free) and can be purchased in advance from the Roosevelt Center and Club and Team members or at the door on the night of the event.

Equal Employment Opportunity Training Sessions set for Oct., Nov.

The following are the remaining Equal Employment Opportunity Training sessions for prospective hiring committee members scheduled through November. The training is available for anyone who is scheduled to serve on a hiring committee or anyone who would like to have the training (with their supervisor's permission to attend) so that they will be eligible to sit on a hiring committee in the future. RSVP to Etta Dial at ext. 27273 or via e-mail at edial@fullcoll.edu. The training is required every two years. Those who aren't certain if their training is up to date can contact Angela Cotton in Human Resources at ext. 84816.

Campus	Date	Time	Location
Anaheim	Thurs., Oct. 13	9:00-10:00 a.m.	Staff Development Conf. Room, 3rd. Fl.
Fullerton	Wed., Nov. 2	3:00-4:00 p.m.	Conference Room 1018
Cypress	Tues., Nov.8	3:30-4:30 p.m.	Business Lecture Hall #203, 2nd Floor
Anaheim	Tues., Nov. 15	9:00-10:00 a.m.	Staff Development Conf. Room, 3rd Fl.

Blueprint

A report
on Cypress
College's
Construction
Projects

Faculty in Tech Ed III are finally moving in to their new home. The office space is now complete in the Health Science Division Office and the rest of the building is finally reaching the point of completion.

The first two floors of the old Library/Admin building are looking really nice as well with a move-in date of December. Financial Aid, DSPS, EOPS and the deans offices for Counseling and Student Support Services will be the occupants. The area was vacated last semester to permit the re-model.

The elevator on the front of the building should be completed next month. The milestone is important to assist with the move of the Library into the new L/LRC in January.

Fencing has gone up for the construction of three new elevators. The elevators in this phase will be constructed outside of the Business and Tech Ed I buildings, and between Gym 2 and Tech Ed II. These are extremely important to accessibility in these areas. The construction will block the new sidewalk next to Tech Ed I intermittently as the work crews need to get vehicles, equipment and materials into that small space. There will be signage reading "temporarily closed" when the crews need to close it. The contractor will reopen the gate when access is not needed by his crew. This project is scheduled for a six month duration.

Crews are working extended hours to complete the Library/Learning Resource Center in time for a January opening. The exterior is near completion at this point and inside millwork has begun.

BRIEFLY

The Health Center has ordered flu vaccine that should be arriving the 3rd or 4th week in October. As soon as it arrives, notification will be sent via e-mail. The cost of the flu shots will be \$20. If you can't make it over to the Health Center, nursing students will have their "Shots 'R Us" flu-shot cart out and about, making flu shots available at various buildings on campus.

More information will follow; however, feel to call or e-mail the Health Center with questions.



The Honors Club is hosting "A Night of Music" on Friday, October 21, in the Fine Arts Building, Room 304, from 5 p.m. to 7 p.m. Tickets are \$5 and are available at the Transfer Center. All proceeds raised will be donated to the American Red Cross for the hurricane relief fund. The mini-concert will feature performers from Cypress College and from other local universities and colleges as well.



Staff Development will be accepting orders for evergreens for their annual fundraiser through November 2. All orders will be delivered the week after Thanksgiving. For information, call ext. 47324.

@Cypres
Online

Cypress College Transfer Awareness Week

October 17-21, 2005

Monday Oct. 17th, 2005

Transfer Day Fair
in front of Humanities
10am-1pm

Art Major Specific Mini-Fair
10am-1pm in FA 1st Floor Lobby Area

Chapman University Rep. Appts.
2-4pm @ The Transfer Center

UC Irvine Rep. Appts.
2-4pm @ The Transfer Center

"How to Transfer To UCLA" Workshop
2-3pm @ FA-112

Tuesday, October 18, 2005

UC Irvine Rep. Appts.

9am-4pm @ The Transfer Center

"How To Make A Smooth Transition to the university" Workshop

2-3pm in FA-112

"How To Search The Web For Scholarships" Workshop

3-4pm in FA-112

"How To Fill Out The UC Application" Workshop

1:30pm-2:30pm in FA-Staff Conf. Rm.

Wednesday, October 19, 2005

Computer Science, Engineering & Math Mini-Fair

10am-1pm @ SEM 1st Floor Lobby Area

"How To Write The UC Essay" Workshop

2-3pm in FA-311

"How To Use ASSIST" Workshop

2-3pm in FA-112

"How To Apply For Financial Aid" Workshop

3-4pm in FA-112

Thursday, October 20, 2005

Math & Natural Sciences Mini Fair

10am-1pm @ SEM 1st Floor Lobby

UC Santa Barbara Rep. Appts.

2:30pm-5:30pm @ The Transfer Center

CSU Fullerton Rep. Appts.

3-5pm @ The Transfer Center

"How to Transfer to a CSU" Workshop

5-6pm @ FA-Staff Conf. Room

Friday, October 21, 2005

UC Irvine Tour

7am-1pm (Meet at the Transfer Center)

CSU Fullerton Rep. Appts.

11-2pm @ The Transfer Center

"How To Fill Out the CSU Application" Workshop

2-3pm @ FA-Staff Conf. Rm

Cypress College Transfer Center is located in FA-100

Office Hours: 8am-5pm

Phone Number: (714) 484-7131



DEPARTMENT OF THEATER & DANCE
Fine Arts Division

Entertainment News

For Immediate Release

Contact: Diana Polsky

Phone: 714-484-7207

Email: dpolsky@cypresscollege.edu

Subject: **Into the Woods scheduled at Cypress College**

Into the Woods is set to open October 21 at Cypress College. Featuring James Lapine's most enchanting book and some of Stephen Sondheim's most haunting music, this magical musical follows a witch, a Baker and his wife, Cinderella, Little Red Riding Hood, and a couple of assorted Princes Charming as they venture into an enchanted forest seeking "happily ever after". The musical posed the question "and then what?" and the answers are as varied as the characters.

The production, directed by Jim Hormel, includes lush sets by Barbara Braden Meyer, costumes by Becky Odgen, choreography by Lindsey Martin and a cast of 43 including Brian Pirnat as the Baker, Afton Quast as the Baker's Wife.

Cypress College Campus Theater
9200 Valley View, Cypress CA 90630

October 21, 22, 28, 29 at 8PM and October 23 & 30 at 4PM

General Admission is \$15.00

For information: Call the Box Office at (714) 484-7200

or visit us on the WEB at <http://finearts.cypresscollege.edu/~theater/>

####

9200 Valley View St
Cypress, California 90630-5897
Phone (714) 484-7201 FAX (714) 527-1653

Cypress College – FALL 2005

2nd Session Short Term Classes Begin On or After October 24, 2005

CRN	SEC	DATES	TIME	DAYS	INSTRUCTOR	ROOM	CRN	SEC	DATES	TIME	DAYS	INSTRUCTOR	ROOM
ACCOUNTING							ENGLISH						
ACCT 103 C		COMPUTERIZED ACCOUNTING				1 Unit	ENGL 058 C		READING AND WRITING II				4 Units
13056	100	10/27-12/15	4:30P- 6:50P	R	Muise, M.	BUS-317	13745	700	10/24-12/21	ONLINE		Jones, S.	
14327	700	10/28	10:30A-12:30P	F	Miller, J.	BUS-319	13748	701	10/24-12/21	ONLINE		Jones, S.	
		12/16	10:30A-11:50A	F	Miller, J.	BUS-319							
		10/24-12/21	+ ONLINE	PORTION	Miller, J.								
AIRLINE AND TRAVEL CAREERS							ENGL 060 C COLLEGE WRITING PREPARATION						
ATC 170 C		JOB SKILLS COMMUNICATION				1½ Units	10841	027	10/25-12/20	1:30P- 5:45P	T R	Fujimoto, J.	3 Units
14244	001	11/02-12/21	9:00A-12:10P	W	Reiland, K.	TE2-206							HUM-101
12627	100	11/01-12/20	6:00P- 9:10P	T	STAFF	TE2-206							
ATC 298AC		CABIN SAFETY SIMULATION				½ Unit	ENGL 096 C		COLLEGE READING STRATEGIES				3 Units
14631	002	11/07-11/10	9:30A-12:20P	M	Reiland, K.	TE2-206	13792	700	10/24-12/21	ONLINE		Kashi, B.	
			9:30A- 3:20P	R	Reiland, K.	BOEING							
ANTHROPOLOGY							ENGL 100 C COLLEGE WRITING						
ANTH 102 C		CULTURAL ANTHROPOLOGY				3 Units	11064	027	10/25-12/20	1:30P- 5:45P	T R	Najm, T.	3 Units
10028	004	10/24-12/21	3:30P- 6:20P	M W	STAFF	HUM-323	13732	703	10/24-12/21	ONLINE		Schroeder, N.	HUM-106
							14426	706	10/24-12/21	ONLINE		Zuidervaart, G.	
							13731	702	10/25	6:30P- 8:20P	T	Kabaji, N.	HUM-324
									12/20	6:30P- 8:20P	T	Kabaji, N.	HUM-324
									10/24-12/21	+ ONLINE	PORTION	Kabaji, N.	
ART							ENGL 102 C INTRODUCTION TO LITERATURE						
ART 110 C		INTRODUCTION TO ART				3 Units	13739	701	10/24-12/21	ONLINE		Marshall, B.	3 Units
13974	701	10/24-12/21	ONLINE		Rothschild-Boros, M.								
ASTRONOMY							ENGL 103 C CRITICAL REASONING AND WRITING						
ASTR 116 C		INTRODUCTION TO ASTRONOMY				3 Units	13743	703	10/24-12/21	ONLINE		Fague, A.	3 Units
13170	102	10/25-12/20	6:00P- 9:10P	T R	Vu, P.	SEM-308							
AUTOMOTIVE TECHNOLOGY							ENGL 106 C CRITICAL THINKING						
AT 203 C		TOYOTA ENGINE CONTROLS 852				2 Units	13776	700	10/24-12/21	ONLINE		Klein, M.	3 Units
12879	100	10/25-12/08	6:30P- 9:00P	T R	Fu, A.	TE1-105							
AT 207 C		TOYOTA AUTOMATIC TRANS 262				1½ Units	GEOGRAPHY						
14082	100	10/26-11/23	6:30P- 9:20P	M W	Moreno, J.	TE1-105	GEOG 100 C		WORLD GEOGRAPHY				3 Units
AT 208 C		TOYOTA MANUAL TRANS 302				1 Unit	10401	005	10/24-12/21	2:00P- 4:50P	M W	Quinn, C.	HUM-320
12893	100	11/28-12/14	6:30P- 9:20P	M W	Moreno, J.	TE1-105	GEOG 231 C		GEOGRAPHIC INFORMATION SYSTEMS: VECTOR APPLICATIONS				3 Units
AT 221 C		UPPER ENGINE BLUEPRINTING				2 Units	12809	100	10/24-12/21	5:30P- 7:29P	M W	Quinn, C.	HUM-315
12883	100	10/25-12/20	7:00P- 9:05P	T R	Dighera, M.	TE3-115	LAB		7:30P-10:20P	M W	Quinn, C.	HUM-315	
AVIATION							HEALTH INFORMATION TECHNOLOGY						
AVIA 298BC		JET SIMULATOR ORIENTATION				½ Unit	HI 100 C		TRENDS IN HEALTH CARE DELIVERY				2 Units
14634	100	10/28-11/04	6:00P- 8:50P	F	STAFF	TE2-206	13086	102	10/20-12/15	5:00P- 9:15P	R	Brown, D.	TE3-213B
		11/14-11/18	TBA	TBA	STAFF	BOEING	HEALTH SCIENCE						
COMPUTER INFORMATION SYSTEMS							HS 066 C SELECTED TOPICS FOR NURS 297 C						
CIS 107 C		INTRODUCTION TO WINDOWS				1 Unit	13201	001	10/24-12/19	11:00A-11:50A	M	STAFF	½ - 2 Units
11102	101	10/25-12/20	6:00P- 7:50P	T	Kennard, A.	BUS-311						TE3-213A	
CIS 231 C		CISCO NETWORKING 2				3 Units	HS 068 C		SELECTED TOPICS - GERONTOLOGY				½ - 2 Units
13110	100	10/24-12/21	5:00P- 6:59P	M W	Izadi, B.	BUS-248	13511	001	10/25-12/20	12:00N-12:50P	T	STAFF	TE3-310
LAB			7:00P- 9:50P	M W	Izadi, B.	BUS-248	HS 099 C		HEALTH SCIENCE INDEPNENT STUDY				½ - 2 Units
COUNSELING AND STUDENT DEVELOPMENT							HISTORY						
COUN 074 C		COMPUTER ACCESS II				3 Units	HIST 170 C		HISTORY OF THE UNITED STATES				3 Units
13406	001	10/25-12/20	12:00N- 2:14P	T R	Michelle, D.	SEM-129	12593	006	10/24-12/21	2:00P- 4:50P	M W	Newman, J.	HUM-311
LAB			2:15P- 5:20P	T R		SEM-129	13960	801	11/04-12/10	6:00P- 9:50P	F	Reeve, T.	HUM-125
COUN 140 C		EDUCATIONAL PLANNING				½ Unit			8:00A- 3:50P	S	Reeve, T.	HUM-125	
14264	031	10/28-11/04	8:30A-12:45P	F	Grantham, R.	TE2-203	HIST 171 C		HISTORY OF THE UNITED STATES				3 Units
14489	035	10/26-11/23	10:00A-10:50A	M W	Mosqueda-Ponce, T.	BUS-318A	12353	007	10/25-12/20	3:30P- 6:40P	T R	Reeve, T.	HUM-330
13226	027	10/25-11/10	11:00A-12:15P	T R	Lawson, V.	HUM-244	HUMAN SERVICES						
COUN 141 C		CAREER EXPLORATION				1 Unit	HUSR 200 C		INTRODUCTION TO HUMAN SERVICES				3 Units
14540	012	10/25-12/06	7:30A- 8:45A	T R	Easton, S.	TE2-203	10433	002	10/25-12/20	3:30P- 6:40P	T R	Zager, G.	HUM-246
14544	010	10/26-11/30	12:00N- 2:50P	W	Easton, S.	TE2-203	HUSR 275 C		ETHICAL ISSUES IN HUMAN SERVICES				3 Units
COUN 151 C		CAREER AND LIFE PLANNING				3 Units	12597	100	10/24-12/21	4:00P- 6:50P	M W	Kistner, W.	HUM-244
14537	704	10/24-12/21	ONLINE		Mattson, C.		MARKETING						
DENTAL ASSISTANT							MKT 086 C SALES PROSPECTING						
DA 058 C		CLINICAL EXTERNSHIP I				1½ Units	13062	800	12/03-12/10	8:00A-12:15P	S	Kishel, P.	½ Unit
13183	601	10/24-12/19	9:00A- 9:59A	M	STAFF	DNTOFF	MKT 087 C		SALES PRESENTATIONS				½ Unit
LAB			10:00A-11:50A	M		DNTOFF	13063	800	12/03-12/10	1:00P- 5:15P	S	Kishel, P.	BUS-307
LAB			1:00P- 4:50P	M		DNTOFF	MKT 093 C		TARGET MARKETING				½ Unit
ECONOMICS							MKT 094 C BUYER BEHAVIOR						
ECON 105 C		PRINCIPLES OF ECONOMICS-MICRO				3 Units	12749	800	10/22-10/29	8:00A-12:15P	S	Kishel, G.	½ Unit
10036	003	10/25-12/20	2:00P- 5:10P	T R	Schick, P.	HUM-103	MKT 094 C		BUYER BEHAVIOR				½ Unit
							12750	800	10/22-10/29	1:00P- 5:15P	S	Kishel, P.	BUS-307
MATH							MATHEMATICS						
MATH 025 C		ELEMENTARY ALGEBRA REVIEW				2 Units	MATH 025 C		ELEMENTARY ALGEBRA REVIEW				2 Units
13242	800	10/29-12/17	8:00A- 1:05P	S	Carbonell, J.	SEM-217	13242	800	10/29-12/17	8:00A- 1:05P	S	Carbonell, J.	SEM-217
MATH 045 C		INTERMEDIATE ALGEBRA REVIEW				2 Units	MATH 045 C		INTERMEDIATE ALGEBRA REVIEW				2 Units
13621	800	10/29-12/17	8:00A- 1:05P	S	Can, M.	SEM-206	13621	800	10/29-12/17	8:00A- 1:05P	S	Can, M.	SEM-206

M = Monday T = Tuesday W = Wednesday R = Thursday F = Friday S = Saturday U = Sunday

CRN	SEC	DATES	TIME	DAYS	INSTRUCTOR	ROOM	CRN	SEC	DATES	TIME	DAYS	INSTRUCTOR	ROOM
NURSING							PSYCHIATRIC TECHNICIAN						
NURS 105 C		BASIC CARDIOPULMONARY NURSING				½ Unit	PT 115 C		NURSING SCIENCE II				7 Units
14443	800	11/05	8:00A- 5:20P	S	Piburn, E.	TE3-310	14438	001	10/24-12/15	6:30A- 2:35P	MT	Miller, P.	HOSP
NURS 105HC		HONORS CARDIOPULMONARY NURSING				½ Unit				7:00A-12:10P	WR	Ramos, J.	TE3-311
14444	800	11/05	8:00A- 5:20P	S	Piburn, E.	TE3-311					W	Miller, P.	TE3-311
NURS 193 C		INTRO TO MED-SURG/GERO NURSING				3½ Units	LAB			12:15P- 1:05P	W	Ramos, J.	TE3-311
14587	002	10/24-12/21	8:00A-10:50A	M	Harvey, C.	TE3-310						Miller, P.	
LAB			8:00A-11:15A	T		TE3-310						Ramos, J.	
LAB			TBA	MTWR		HOSP							
NURS 197 C		MATERNAL/NEWBORN NURSING				3½ Units	PT 125 C		DEVELOPMENTAL DISABILITIES II				6½ Units
14513	001	10/24-12/14	8:00A-11:35A	M	Putman, E.	TE3-315	14584	001	10/24-12/15	6:30A- 2:35P	MTW	Selga, M.	HOSP
LAB			TBA	TW	Piburn, E.	HOSP				7:00A- 2:55P	R	Franks, J.	TE3-316
NURS 293 C		MENTAL HEALTH NURSING				3½ Units	PT 135 C		MENTAL DISABILITIES II				7½ Units
14525	001	10/24-11/17	7:00A- 5:20P	WR	Chin, P.	HOSP	14583	001	10/24-12/15	6:30A- 3:30P	MT	Boyce, J.	HOSP
			8:00A-10:50A	M	Chin, P.	TE3-213B	LAB			7:00A-12:10P	WR	Boyce, J.	TE3-315
			8:00A-12:35P	T	Chin, P.	TE3-316				12:30P- 2:50P	W	Boyce, J.	TE3-315
LAB			1:00P- 2:50P	T		TE3-316							
LAB			2:00P- 3:50P	M		TE3-311							
14527	002	11/21-12/15	7:00A- 6:30P	WR	Chin, P.	HOSP							
			8:00A-10:50A	M	Chin, P.	TE3-213B							
			8:00A-12:35P	T	Chin, P.	TE3-316							
LAB			1:00P- 2:50P	T		TE3-316							
LAB			2:00P- 3:50P	M		TE3-311							
NURS 294 C		GERIATRIC NURSING				3 Units							
14531	001	10/24-11/17	6:30A- 4:50P	TW	Kruse, K.	HOSP	PSY 101 C		GENERAL PSYCHOLOGY				3 Units
			8:00A-10:50A	M	Valencia, W.	TE3-311	13536	014	10/24-12/21	2:00P- 4:50P	M W	Cooper, C.	HUM-124
			8:00A-11:25A	R	Valencia, W.	TE3-310	13158	012	10/25-12/20	2:00P- 5:10P	T R	Young, B.	HUM-124
14532	002	11/21-12/15	6:30A- 4:50P	TW	Kruse, K.	HOSP	13925	801	11/04-12/10	6:00P- 9:50P	F	Martinez, M.	HUM-124
			8:00A-10:50A	M	Valencia, W.	TE3-311				8:00A- 3:50P	S	Martinez, M.	HUM-124
			8:00A-12:50P	R	Valencia, W.	TE3-310	PSY 139 C		DEVELOPMENTAL PSYCHOLOGY				3 Units
NURS 297 C		MED-SURG NURSING III				5 Units	14602	003	10/25-12/20	3:30P- 6:40P	T R	Gonzales, J.	HUM-125
14536	001	10/24-12/15	8:00A-10:20A	M	Winkler, J.	TE3-317	PSY 218 C		PARENTING THE ABUSED CHILD				½ Unit
			8:00A-10:15A	T	Wilson, M.	TE3-317	14468	801	10/29	8:00A- 5:20P	S	Lee, C.	HUM-244
LAB			11:00A-12:50P	T	Wilson, M.	TE3-315	PSY 237 C		CROSS-CULTURAL RELATIONSHIPS				3 Units
LAB			TBA	WR		HOSP	12299	002	10/24-12/21	3:30P- 6:20P	M W	Young, B.	HUM-317
PHILOSOPHY AND RELIGIOUS STUDIES							RADIOLOGIC TECHNOLOGY						
PHIL 100 C		INTRODUCTION TO PHILOSOPHY				3 Units	RADT 173 C		ULTRASOUND INSTRUMENTATION				1½ Units
10652	100	10/25-12/20	6:30P- 9:40P	T R	Young, M.	HUM-319	13014	001	10/28-12/16	8:00A-12:15P	F	Anton, E.	TE3-311
PHYSICAL EDUCATION							SOCIOLOGY						
PE 152 C		FITNESS TRAINING LAB				½ - 2 Units	SOC 101 C		INTRODUCTION TO SOCIOLOGY				3 Units
14589	002	10/24-12/21	TBA	MTWRFS	Rubino, K.	G1-102	12335	008	10/24-12/21	3:30P- 6:20P	M W	Brewer, C.	HUM-120
PE 156 C		POWER TRAINING				½ - 2 Units	SOC 218 C		PARENTING THE ABUSED CHILD				½ Unit
14592	002	10/24-12/21	TBA	MTWRFS	Rubino, K.	G1-102	13034	800	10/29	8:00A- 5:20P	S	Lee, C.	HUM-244
PE 234 C		CONTEMPORARY PERSONAL HEALTH				3 Units	SOC 237 C		CROSS-CULTURAL RELATIONSHIPS				3 Units
11499	101	10/25-12/20	6:15P- 9:25P	T R	Shelkey, R.	G2-201	12302	002	10/24-12/21	3:30P- 6:20P	M W	Young, B.	HUM-317
POLITICAL SCIENCE							SPEECH						
POSC 100 C		UNITED STATES GOVERNMENT				3 Units	SPCH 100 C		HUMAN COMMUNICATION				3 Units
10219	010	10/25-12/20	3:30P- 6:40P	T R	Eperjesi, K.	HUM-329	12102	021	10/25-12/20	12:30P- 3:40P	T R	Kaimikaua, C.	HUM-247
							14576	022	10/24-12/21	2:00P- 4:50P	M W	STAFF	HUM-239
THEATER ARTS							THEATER ARTS						
THEA 100 C		INTRODUCTION TO THE THEATER				3 Units	13880	705	10/24-12/21	ONLINE		Christensen, G.	
							13881	706	10/24-12/21	ONLINE		Depontee, F.	